

This email looks best with images enabled.
To view this email online, [follow this link](#).



Network Rail Kent route

Kingsferry Bridge closure - 2200, 25 October to 0500, 3 November

t



- Bridge repairs will take place between 22:00, Friday 25 October and 05:00, Sunday 3 November

- **Network Rail and Kent County Council have agreed measures to keep people moving**
- **People are still advised to change travel plans to help reduce road congestion.**

Dear stakeholder,

We will be making further bridge repairs between 2200, Friday 25 October and 0500, Sunday 3 November. The public in Sheppey and Sittingbourne are being advised to plan ahead and change their travel plans, if possible, as the Kingsferry Bridge closes for eight days. Network Rail will use the time to complete the replacement of the ropes that lift the bridge for shipping.

The October closure comes after scans of the steel ropes found they had degraded, meaning the rope replacement which was planned for 2026 had to be urgently brought forward. If the work isn't done before winter, there is a risk that the ropes could fail and the bridge would close for a much longer period.

The lifting ropes in the Kingsferry Bridge towers and the counterweight ropes that balance the bridge deck when it lifts were replaced over a series of closures in June and July. The lifting ropes in the Kent towers will now be replaced in the Kent school half-term in October.

Doing the work when schools are closed

Taking on board lessons from the previous closures, Network Rail, has decided to complete the works in the half term when most schools will be closed, there will be less traffic on local roads and people will have more flexibility with their travel plans.

Agreements with Kent Council County to keep people moving

To further reduce road congestion when the Kingsferry Bridge is closed in October, Network Rail and Kent County Council have agreed that the traffic management from the northbound A249 will be temporarily removed.

Like previous closures of the bridge, free vehicle recovery will be in place from Cowstead Corner to Bobbing Roundabout, all requests for non-emergency roads in the area will be rejected and shuttle buses will be in place for rail passengers, pedestrians and cyclists, as well as under 50cc mopeds and motorbikes.

Getting the work done before winter

We are sorry for the disruption people have experienced and would like to take this opportunity to remind people that we are closing the Kingsferry Bridge to replace the ropes that lift the bridge because they are at risk of failure. If the ropes fail in winter it may take a long time to repair them. We cannot wait until roadworks are complete. By doing the work now, we also remove the risk of a sudden and much more disruptive unplanned closure over the winter when the Sheppey Crossing can close at the same time due to high winds.

Can you change your travel plans when Kingsferry is closed?

We're also asking those people who can change their travel plans to do so. We're fully aware that many people can't change their travel plans, but if you can shop locally, car share, travel outside of peak times or work from home for the week, please do, as this will make journeys easier for people who have no other option but to travel.

Keeping people moving

To help manage the impact on local people and roads, Network Rail and Kent County Council have agreed a number of measures to help keep people moving.

Network Rail and Kent County Council have agreed that the traffic management from the northbound A249 will be temporarily removed. It has been agreed that all requests for non-emergency roadworks in the area will be turned down when the Kingsferry Bridge is closed.

Free recovery will be in place from Bobbing Roundabout to Cowstead Corner to clear accidents and breakdowns quickly. People who need support or see a vehicle that needs assistance, please call 0870 600 3444.

A rail replacement bus will move rail passengers and people are encouraged to use it to help minimise the number of cars on the roads. A shuttle bus will be in place to move pedestrians and cyclists, as well as under 50cc mopeds and their riders.

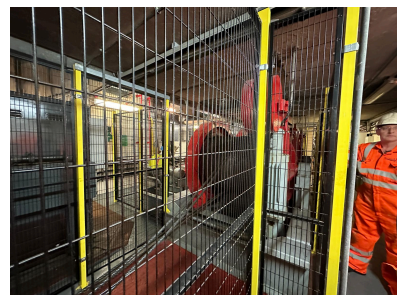
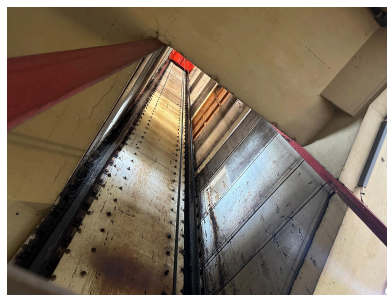
Note for shipping

Shipping and boating stakeholders are reminded that the Kingsferry Bridge will not lift for maritime traffic from **1930, Friday 11 October through to 2359, Saturday 12 October**. The road and railway will not be impacted.

This short closure is to facilitate inspections of the steelwork ahead of the planned closure from **2200, Friday 25 October through to 0500, Sunday 3 November**.

Finally, we'd like to take this opportunity to thank residents for their patience and understanding during this closure of the Kingsferry Bridge.

Detailed travel advice for all modes will be available on the project webpage at www.networkrail.co.uk/KingsferryBridge ahead of the closure.



Free vehicle recovery



Free vehicle recovery is in place.

Please call 0870 600 3444 if you need support.

Get in touch

If you have any questions about the work, the changes for bridge users and alternative travel options please phone our 24/7 Helpline on [03457 11 41 41](tel:03457114141) or go to www.networkrail.co.uk/communities/contact-us

More information about the closure is available www.networkrail.co.uk/KingsferryBridge

southeastern

This message was sent to louise.bareham@hotmail.co.uk using [NewZapp](#). Follow this link to [Manage Preferences or Unsubscribe](#)

POWERED BY

