



Faversham Volunteer
TREE WARDENS

PROMOTING * PLANTING * PROTECTING

Faversham Town Tree Strategy

- What is it?
- Purpose & Aims
- Benefits
- Ideas for TS for Faversham
- Toolkit (Tree Council)

Faversham Town Tree Strategy

2024 - 2029

- The Faversham Tree Strategy would be a 5 year plan to protect and enhance trees, hedgerows and woodlands in the area of the 4 Wards.
- Faversham Town Council declared a Climate Emergency in February 2021 including proposals for seeking locations and to plant native species tree planting on both Council and private land within Faversham.
- A further proposal passed was to encouraging hedge planting for increased biodiversity.

Faversham Town Tree Strategy

2024 - 2029

- The Environment Act 2021 has mandated the creation of Local Nature Recovery Strategies (LNRS) to drive nature recovery and environmental benefits. **MSFN** in Kent.
- Trees can play an important role in a response to both challenges.
- Faversham Town Council has a key role to play in manifestation of the long term benefits of tree planting and tree maintenance.
- The Strategy builds on the existing Tree Policy. It is an evidence based plan.

Tree Canopy Cover – Urban forests

<https://www.forestresearch.gov.uk/tools-and-resources/fthr/tree-canopy-cover-leaflet/>

England's Urban Forests

Using tree canopy cover data to secure the benefits of the urban forest

Urban Forestry and Woodland Advisory Committee Network

Supported by:



England's community forests



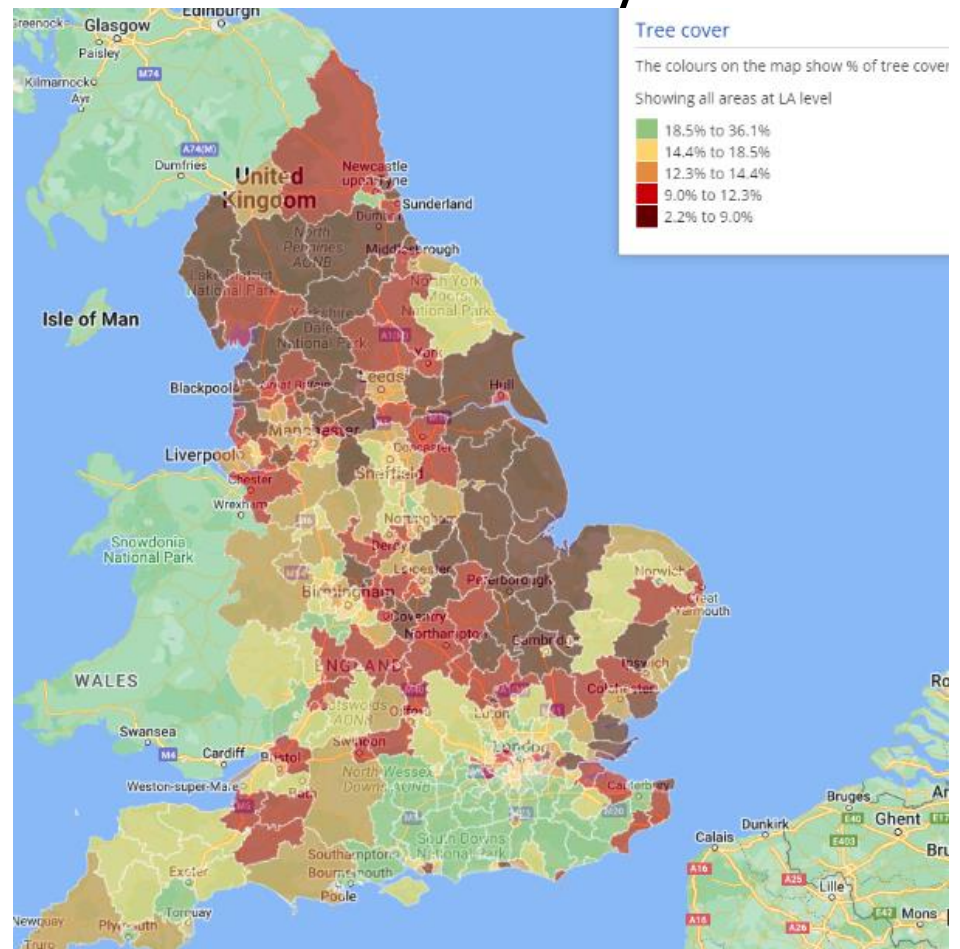
- Tree canopy cover is “the layer of leaves, branches and tree stems that cover the ground when viewed from above”.
- Its measurement can be used as an indication of the benefits provided by the urban forest by linking the area of canopy cover to the ecosystem services provided by trees.
- Index - Strong links with social deprivation.
- The canopy cover of the urban forest is a key component of natural capital.



Tree Canopy Cover

- Forestry Research UK suggests that a minimum standard for tree canopy cover is 20% tree canopy cover.
- Currently 3 out of the 4 Wards in Faversham fall below 20% Canopy Cover.

<https://ocsi.uk/2023/04/12/tree-cover-green-space/>



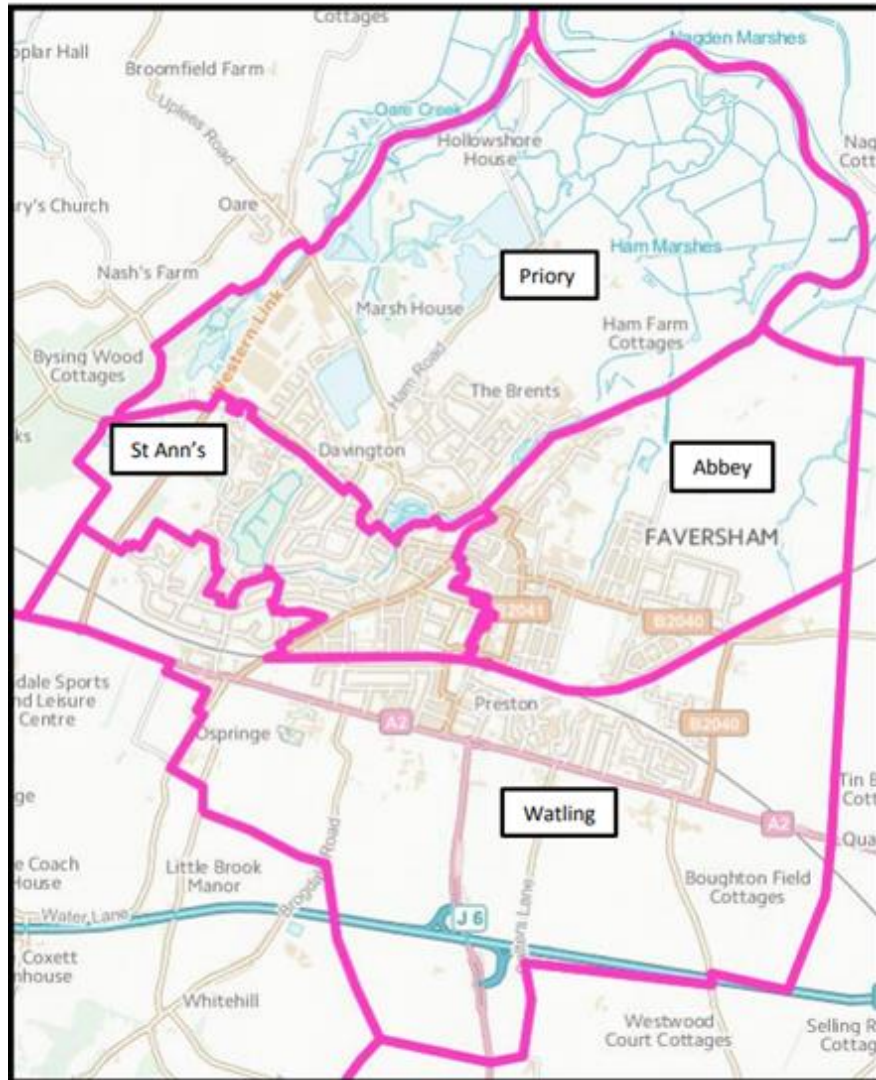
Percent Canopy Cover of Faversham Wards (2023)

Data extracted from Forestry Maps ²

Ward	% Canopy Cover
Abbey	10.0
Priory	6.8
St Ann's *	26.5
Watling	14.7

**Much of this cover is due to the wet woodland canopy of the Knole ME13 7QG*

Faversham Town Council Wards



Purpose and Aims of a Tree Strategy

A Tree Strategy can help to meet statutory biodiversity and climate action obligations.

- A Tree Strategy outlines **monitoring and management** of tree, hedgerow and woodland assets in the Wards.
- A priority aim is to **increase the percentage tree cover** in accordance with recommendations of the Woodland Trust / Forestry Research UK's Tree Canopy Cover . This is in line with the Government's 25 Year Environment Plan to plant 11 million trees .
- A Tree Strategy aims to encourage partnerships with local community groups, businesses and voluntary organisations to meet the aims of the strategy.
- A Tree Strategy can contribute to green infrastructure planning and protect Natural Capital Assets .

Benefits

- Flood mitigation
- Carbon storage
Biodiversity & wildlife
- BNG
- Heat reduction/ shade
- Green streets / welfare
- ***A Tree Strategy means that TC can respond quickly to funding opportunities & hence maximise efficiency.***

Monitoring & Management



Best Practice?



Increase tree cover

- **FTC** Plans Perry Court Estate.
- **Miyawaki (Tiny Forests)**
Pilot in Park Wood,
Maidstone by Tree Council & KCC
- **Schools grounds**
- **Tree giveaway**
Garden friendly species.



CTN - Community Tree Nurseries

- to grow local/regionally appropriate species.
- (example: Cozenton Park, Rainham)
- contribute to the supply of diverse, sustainable, biosecure and resilient tree planting stock.
- Add-on benefits; social benefits, health & welfare, education

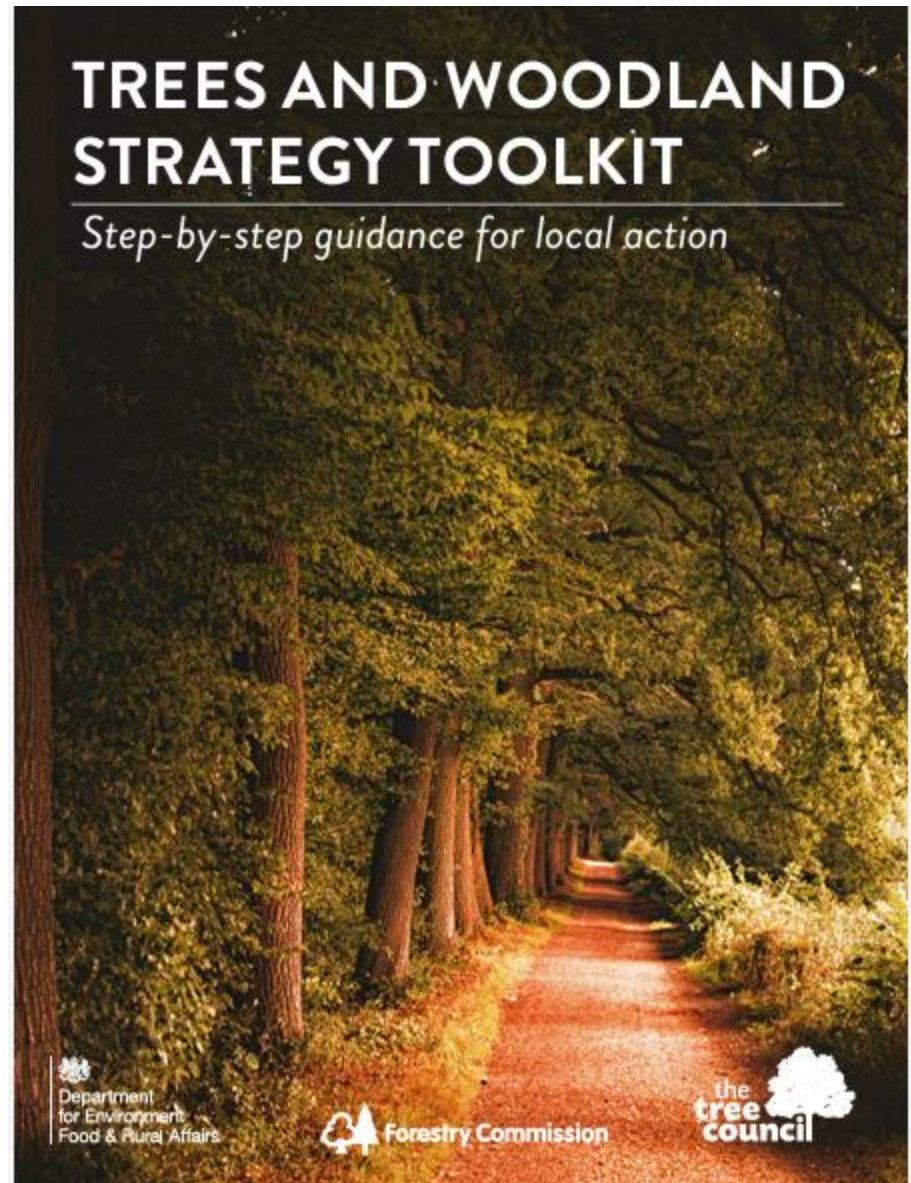
What a Tree Strategy can provide

- Opportunity to create a shared vision.
- Facilitate an evidence-based strategy for target setting & delivery.
- Bring together knowledge & experience through partnerships.
- Embed long term management.
- Compliment Local Nature Recovery Strategies (MSFN) initiatives.

What is the Toolkit?

Funded by Defra, and co-created by The Tree Council, Forestry Commission, Fera Science and Forest Research.

The toolkit provides practical guidance on how to produce and implement a local strategy.



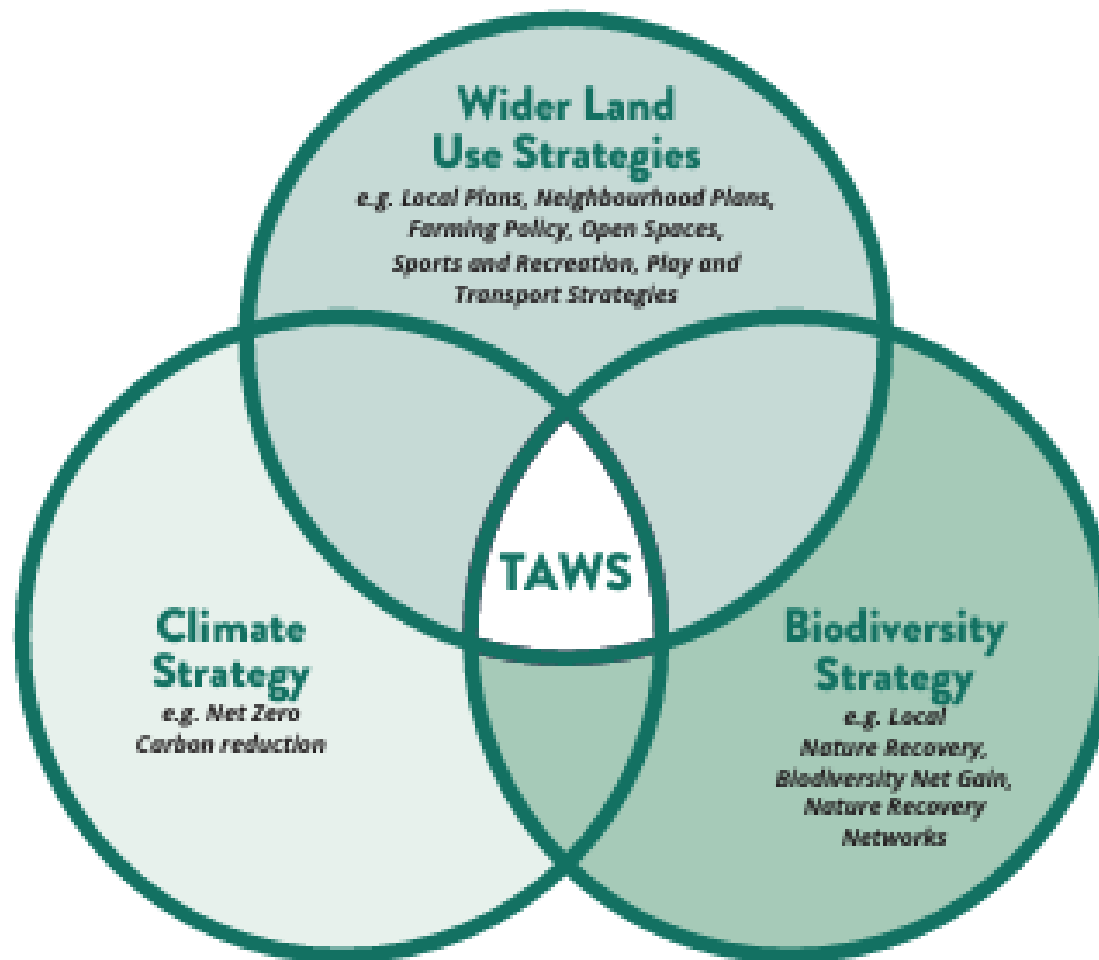


Figure 1 shows the central role of a local Trees and Woodland Strategy and acknowledges that it will complement local authority activities relating to LNRS (nature improvements), Net Zero responses (carbon storage and sequestration) and wider land use strategies. It could also be adopted as a Supplementary Planning Document (SPD) that sits under a Local Plan to conserve and enhance that aspect of the natural and historic environment.

TAWS

- Case Studies- characterising different areas/
councils.

What will a Trees and Woodland Strategy do for my organisation?

The aim of a local TAWS is to help stakeholders to protect, grow and manage a healthy and resilient treescape across public and private land, to meet the needs of local people and help the natural environment to recover, adapt and thrive. It should:

- **Make the case for trees as a key asset to achieving economic, environmental and social objectives**
- **Provide a framework for a healthy treescape**
- **Unlock opportunities for new funding streams**
- **Enable partnership working with local stakeholders**
- **Improve liaison between internal departments**
- **Improve community health and wellbeing**
- **Enable effective communication with the public**
- **Mitigate public health risks through strategic tree management**
- **Save money by reducing impacts of pests and diseases and climate change on the local treescape**
- **Create a framework for embedding trees into planning policy and highway management, including implementing new NPPF guidance on ensuring new streets are tree lined**

A well-created local Trees and Woodland Strategy will act as a collective vision for professional staff and members of the local communities to strive together to achieve.

Partnerships

- Trees for Farms
- Faversham Trees group
- Edible Culture
- Friends of the Faversham Rec
- Faversham Allotments
- Oare Gunpowder Works Country Park
- Abbey School
- QE Grammar School
- Brogdale Collections
- Abbey Physic Gardens
- St Mary's Church yard
- Friends of the Westbrook stream
- Faversham Society
- Kent Tree and Pond Wardens

Moving forward to complete the Tree Strategy

- Management of existing trees.
- Best practice of public spaces with regard to trees.
- Where & what to plant?
- The long term. (beyond 5 years) to preserve mature trees.