

New 33m length double yellow line restriction to protect turning at junction

This drawing is not to be used in whole or part other than for the intended purpose and project as defined on this drawing. Refer to the contract for full terms and conditions.

0	25/01/24	INITIAL DESIGN	AO	SB	JW
Rev	Revision Date	Purpose of revision	Drawn	Check'd	App'd



**Kent County Council**  
 Ashford Highway Depot  
 Henwood Industrial Estate  
 Ashford TN24 8AD  
 Tel: 03000 418181

Project  
**ACTIVE TRAVEL  
 FAVERSHAM TOWN CENTRE**

Drawing status  
**FOR CONSULTATION**

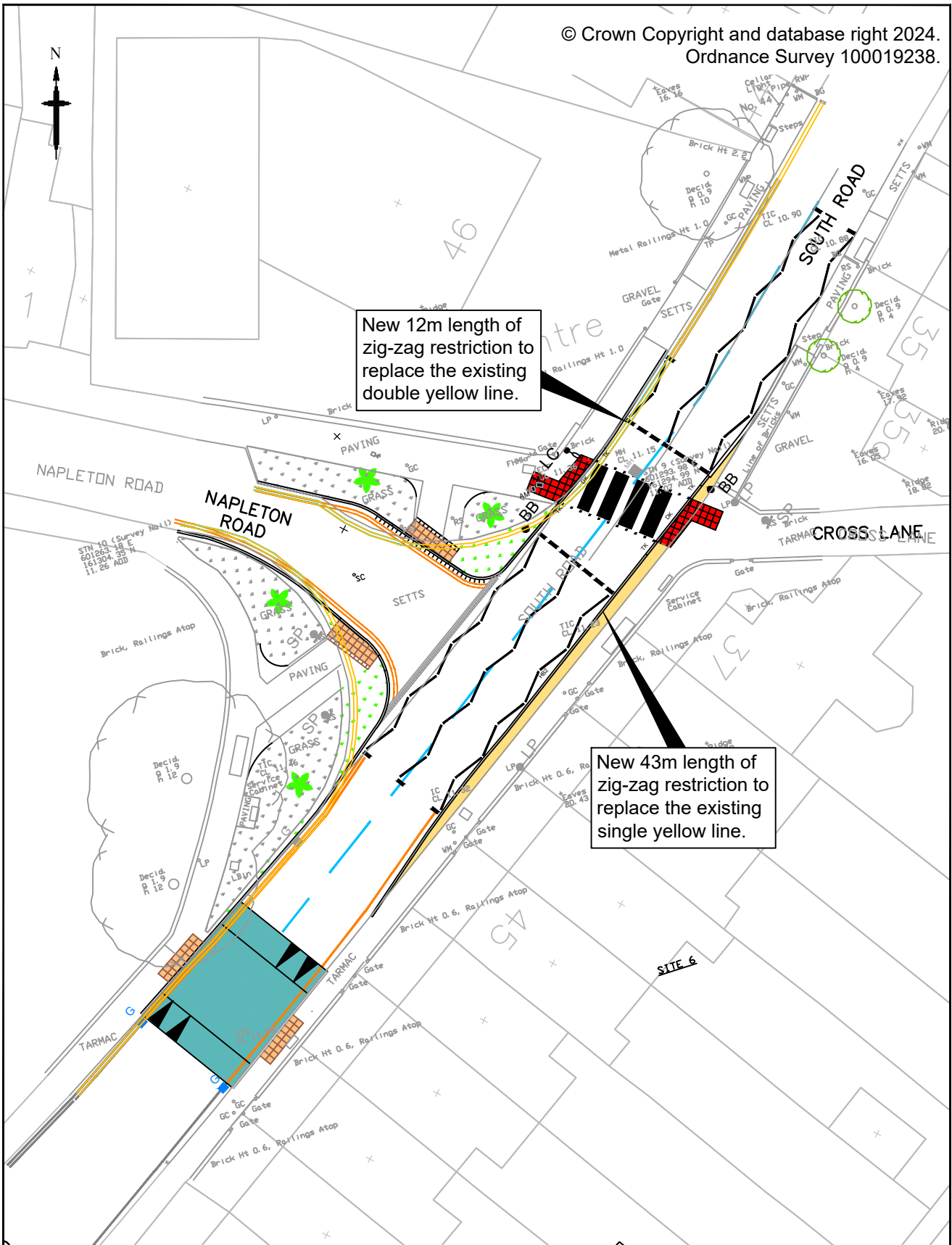
Drawing title  
**SHEET 4**

Scale  
 NTS Do not scale

**TRAFFIC REGULATIONS ORDER**


Drawing number  
**23-SW-AC-873-01-TRO**

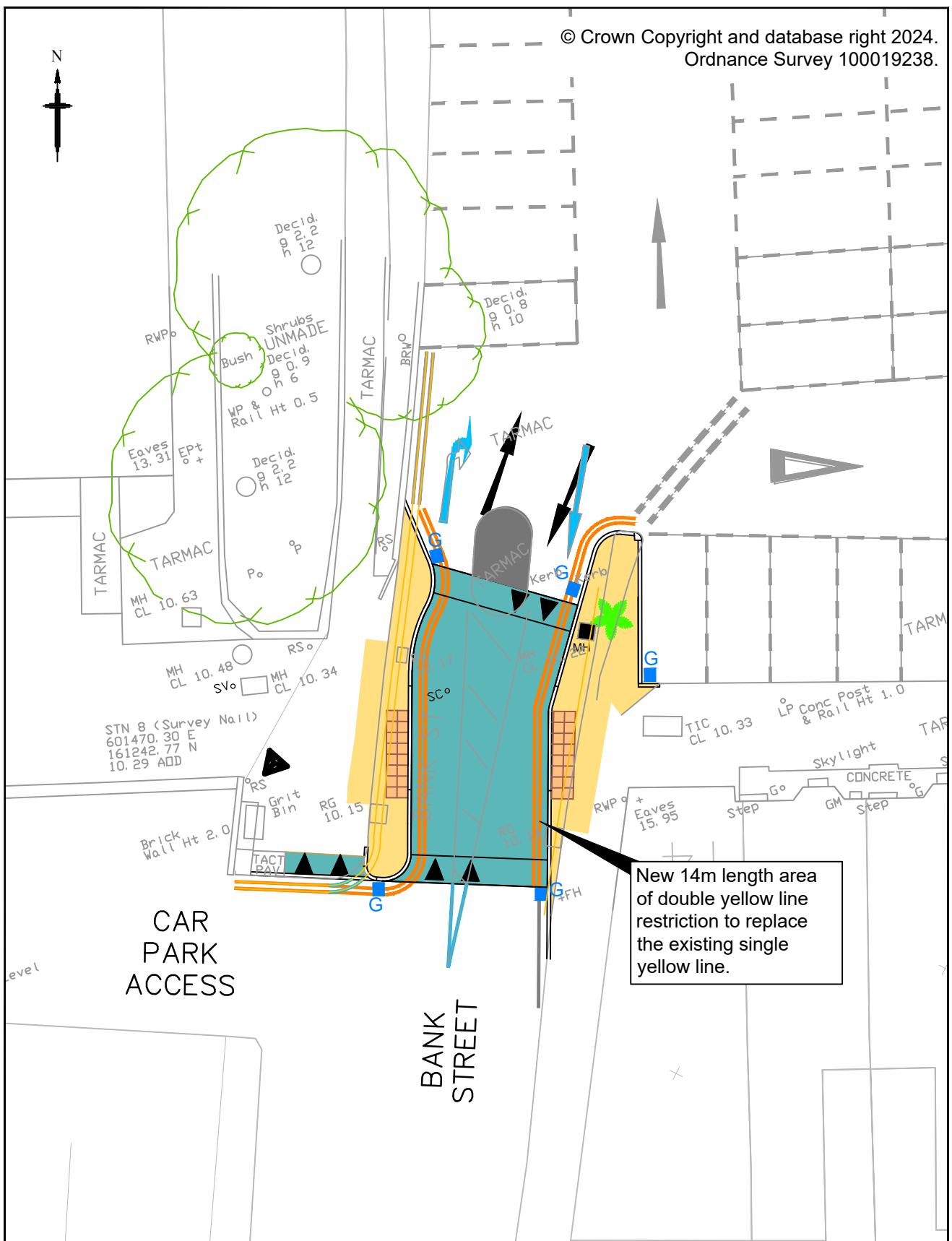
Rev  
 0




New 12m length of zig-zag restriction to replace the existing double yellow line.

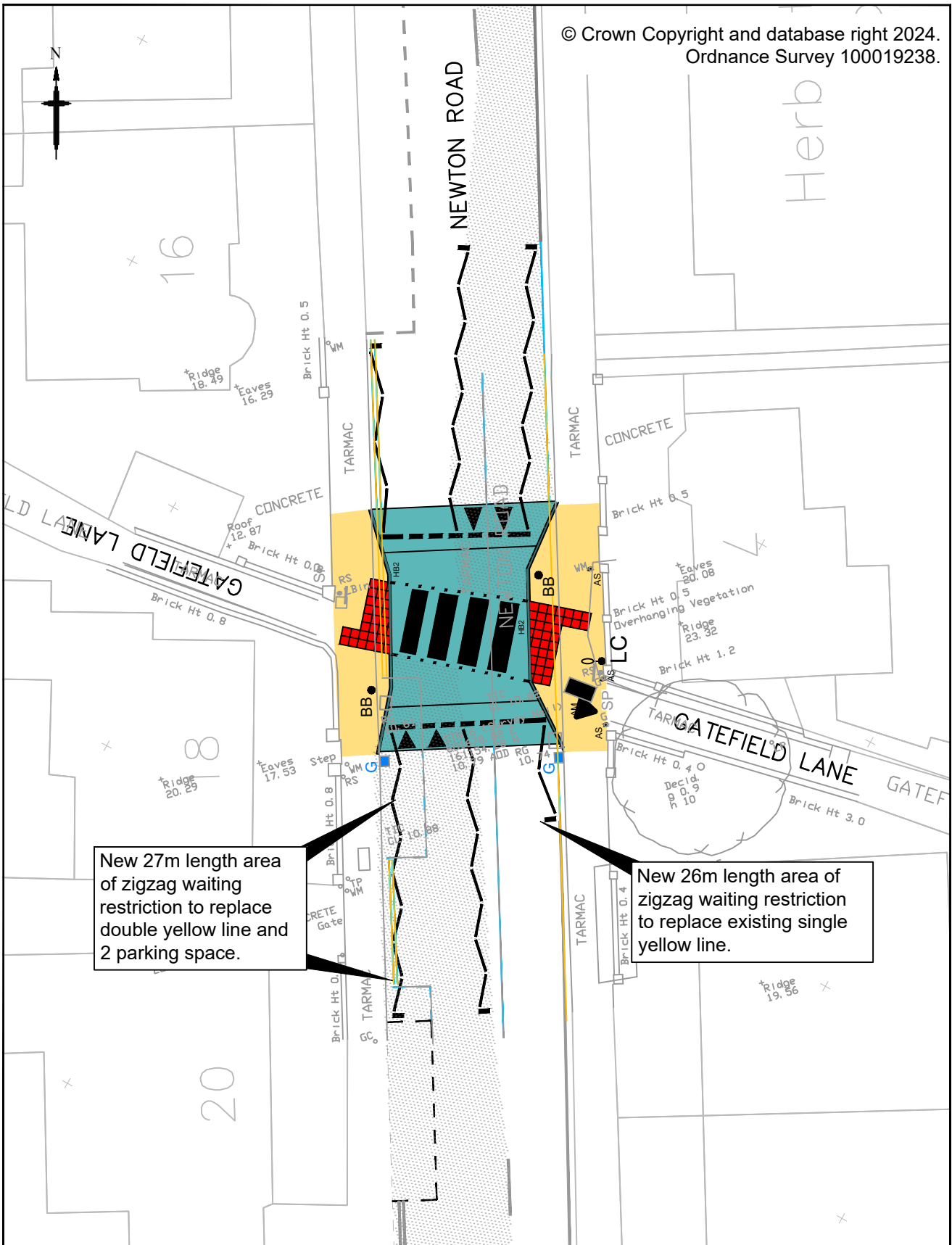
New 43m length of zig-zag restriction to replace the existing single yellow line.

This drawing is not to be used in whole or part other than for the intended purpose and project as defined on this drawing. Refer to the contract for full terms and conditions.		0	25/01/24	INITIAL DESIGN	AO	SB	JW
		Rev	Revision Date	Purpose of revision	Drawn	Check'd	App'd
 <b>Kent County Council</b> Ashford Highway Depot Henwood Industrial Estate Ashford TN24 8AD Tel: 03000 418181		Project <b>ACTIVE TRAVEL FAVERSHAM TOWN CENTRE</b>					
Drawing status <b>FOR CONSULTATION</b>		Drawing title <b>SHEET 5</b>					
Scale <b>NTS</b>		Do not scale					
Drawing number <b>23-SW-AC-873-01-TRO</b>		Rev <b>0</b>					




New 14m length area of double yellow line restriction to replace the existing single yellow line.

This drawing is not to be used in whole or part other than for the intended purpose and project as defined on this drawing. Refer to the contract for full terms and conditions.		0	25/01/24	INITIAL DESIGN	AO	SB	JW
Rev	Revision Date	Purpose of revision			Drawn	Check'd	App'd
 <b>Kent County Council</b> Ashford Highway Depot Henwood Industrial Estate Ashford TN24 8AD Tel: 03000 418181				Project			
Drawing status				Project			
FOR CONSULTATION				ACTIVE TRAVEL FAVERSHAM TOWN CENTRE			
Scale		Do not scale		Drawing title			
NTS				SHEET 6			
Drawing number				TRAFFIC REGULATIONS ORDER			
23-SW-AC-873-01-TRO				Rev			
				0			



New 27m length area of zigzag waiting restriction to replace double yellow line and 2 parking space.

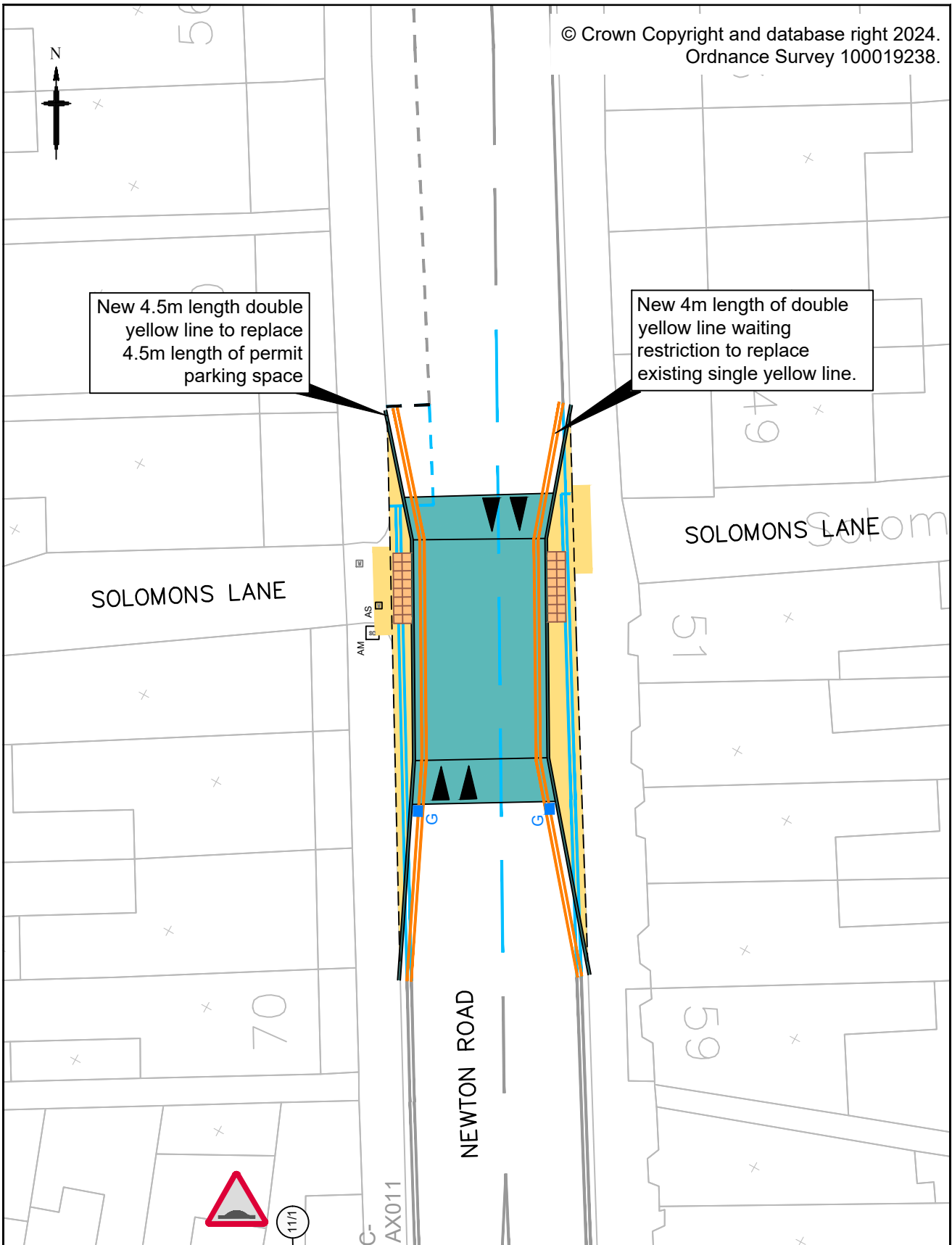
New 26m length area of zigzag waiting restriction to replace existing single yellow line.

This drawing is not to be used in whole or part other than for the intended purpose and project as defined on this drawing. Refer to the contract for full terms and conditions.		0	25/01/24	INITIAL DESIGN	AO	SB	JW
		Rev	Revision Date	Purpose of revision	Drawn	Check'd	App'd
 <b>Kent County Council</b> Ashford Highway Depot Henwood Industrial Estate Ashford TN24 8AD Tel: 03000 418181		Project					
Drawing status		ACTIVE TRAVEL FAVERSHAM TOWN CENTRE					
Scale		Drawing title					
NTS		SHEET 7					
Do not scale		TRAFFIC REGULATIONS ORDER					
Drawing number		Rev					
23-SW-AC-873-01-TRO		0					



New 4.5m length double yellow line to replace 4.5m length of permit parking space

New 4m length of double yellow line waiting restriction to replace existing single yellow line.



This drawing is not to be used in whole or part other than for the intended purpose and project as defined on this drawing. Refer to the contract for full terms and conditions.

0	25/01/24	INITIAL DESIGN	AO	SB	JW
Rev	Revision Date	Purpose of revision	Drawn	Check'd	App'd



**Kent County Council**  
Ashford Highway Depot  
Henwood Industrial Estate  
Ashford TN24 8AD  
Tel: 03000 418181

Project  
**ACTIVE TRAVEL  
FAVERSHAM TOWN CENTRE**

Drawing status  
**FOR CONSULTATION**

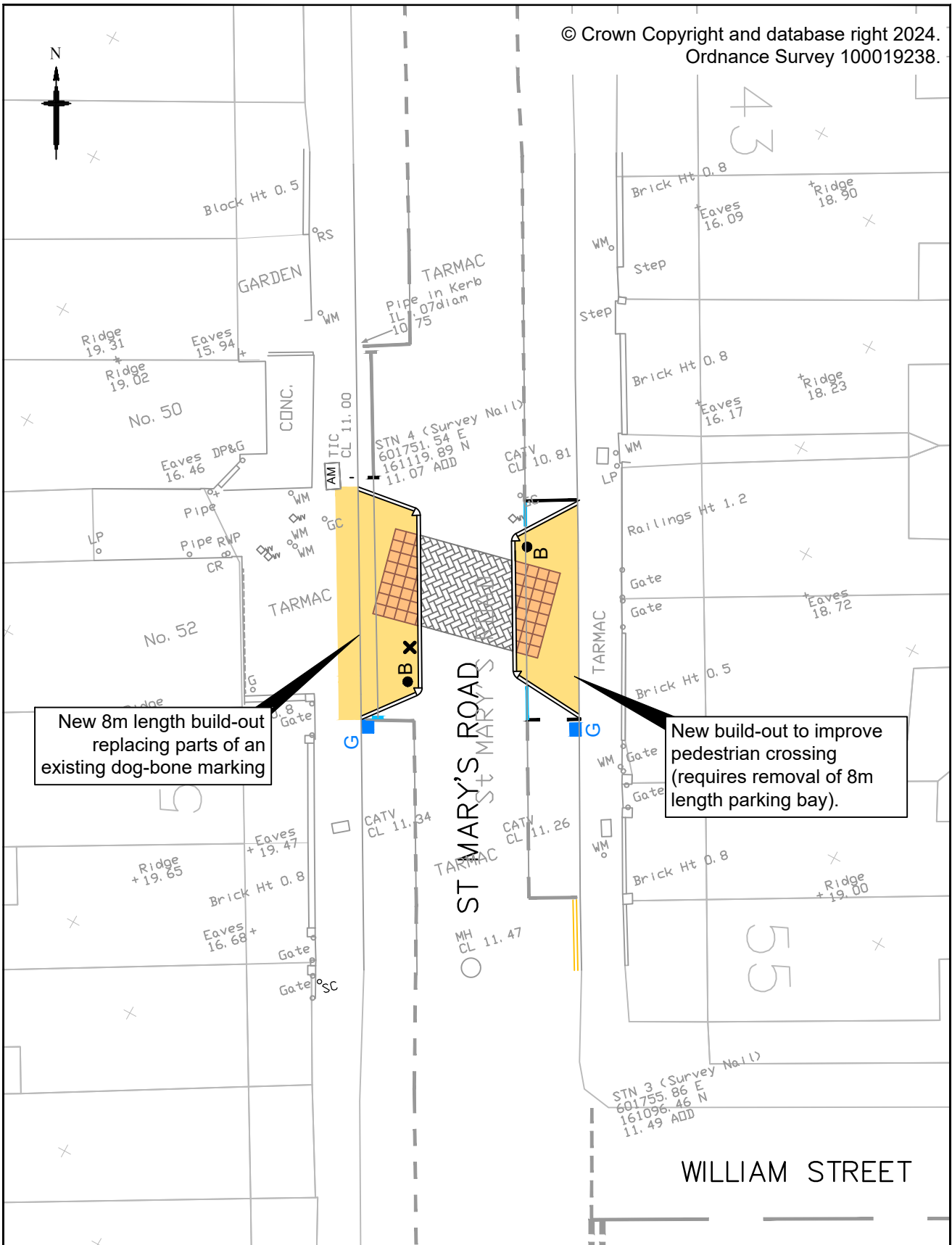
Drawing title  
**SHEET 8**

Scale  
NTS      Do not scale

**TRAFFIC REGULATIONS ORDER**


Drawing number  
**23-SW-AC-873-01-TRO**

Rev  
**0**



New 8m length build-out replacing parts of an existing dog-bone marking

New build-out to improve pedestrian crossing (requires removal of 8m length parking bay).

This drawing is not to be used in whole or part other than for the intended purpose and project as defined on this drawing. Refer to the contract for full terms and conditions.		0	25/01/24	INITIAL DESIGN	AO	SB	JW
Rev		Revision Date		Purpose of revision	Drawn	Check'd	App'd
 <b>Kent County Council</b> Ashford Highway Depot Henwood Industrial Estate Ashford TN24 8AD Tel: 03000 418181				Project			
Drawing status				ACTIVE TRAVEL FAVERSHAM TOWN CENTRE			
Scale				Drawing title			
FOR CONSULTATION				SHEET 9			
Scale		Do not scale		TRAFFIC REGULATIONS ORDER			
Drawing number		Rev					
23-SW-AC-873-01-TRO		0					