



# *A 'Big Live Talk' Health Event*

*Faversham and the NHS 10 Year Plan -  
what should our neighbourhood expect?*

**Presentation of Interim Report to the Community Committee  
Faversham Town Council**

**17<sup>th</sup> November 2025**

a community-led research and planning project supported by..



# *Faversham and the NHS 10 Year Plan*

## Some background.....

### The FHF project began because...

- Demise of our local Commissioning Group and the ‘centralisation’ of decision-making at a Kent and Medway level
- Concern about how local voices would be heard in planning joined-up health and care services for smaller communities like ours
- Impact of extensive house building in and around the town

### Progress so far...

- The 2023 Healthy Futures Exhibition and Survey  
(for full report see FHF website)
- The 2024 Faversham Healthy Futures ‘Live Talk’  
(for full report see FHF website)
- Output: a clear and comprehensive view of what local people expected from their health and care system in the future...

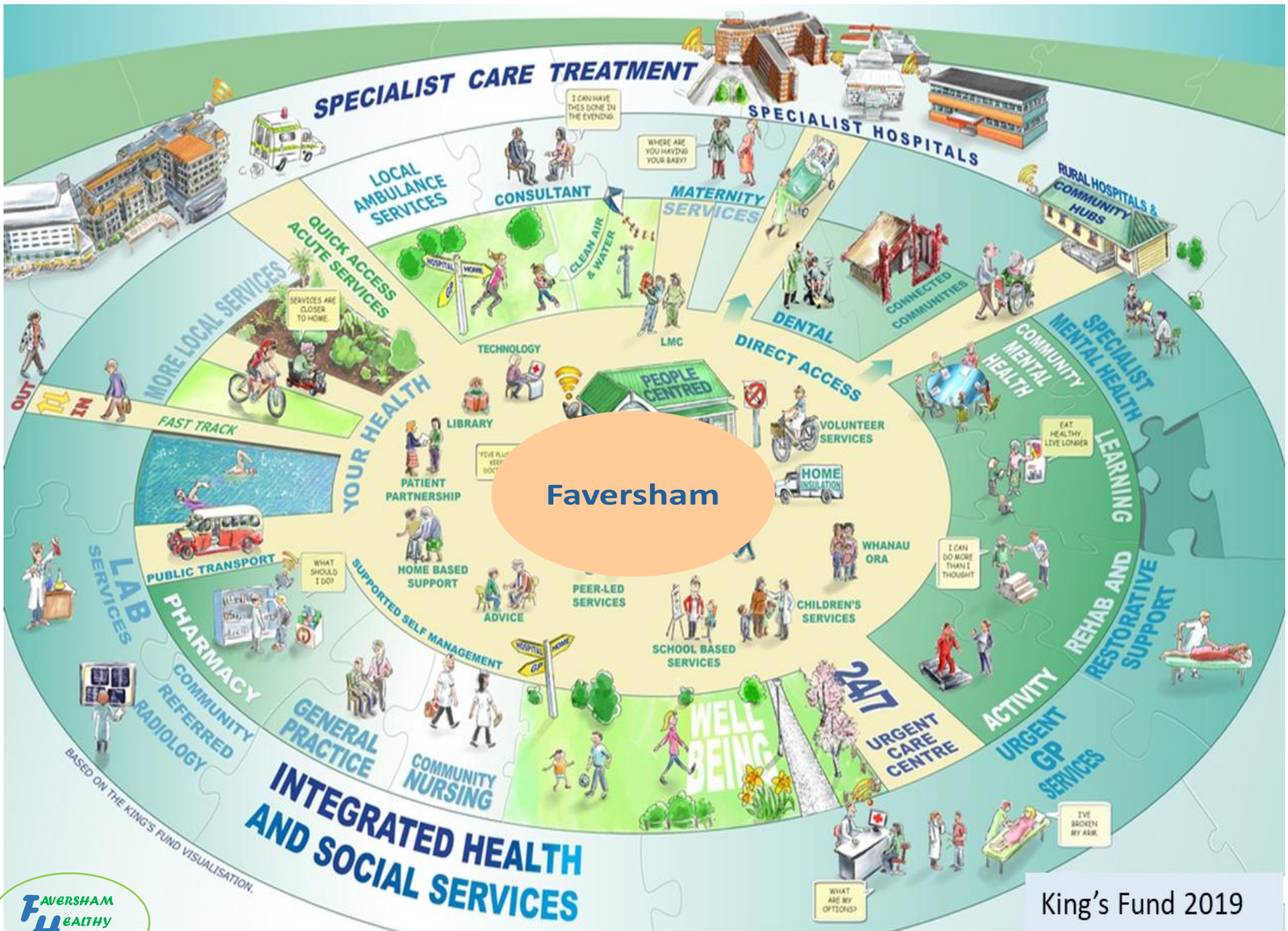


# Faversham's starting point...

## Participants' comments, concerns, issues and advice from the 2024 event.

- Improving access, quality and efficiency by decentralising and localising services and...
- Integrating and managing those services locally.
- Securing the right human and physical resources to do that
- Associated concern that the current local buildings/facilities not being utilised to best effect
- Rebalancing provision of care to include more home/social support/ health promotion/etc.
- Stronger focus on preventing illness - rather than just treating it.
- Better local mental health and NHS dentistry services urgently required
- More emphasis needed on supporting young people –
- Tackling the immediate problem of obesity – especially in school-age children
- Concern that NHS not reassuring public about the impact of any new housing developments on services
- Concern too that L.A. planning process does not focus enough on creating healthy environments – open spaces/cycling/walking/air quality/water treatment etc. Does the NHS have any influence?
- Particular concern about how S106 was to be used in planning health and care facilities/services





BASED ON THE KING'S FUND VISUALISATION.

# Faversham's starting point...

## Participants' comments, concerns, issues and advice from the 2024 event.

- Improving access, quality and efficiency by decentralising and localising services and...
- Integrating and managing those services locally.
- Securing the right human and physical resources to do that
- Associated concern that the current local buildings/facilities not being utilised to best effect
- Rebalancing provision of care to include more home/social support/ health promotion/etc.
- Stronger focus on preventing illness - rather than just treating it.
- Better local mental health and NHS dentistry services urgently required
- More emphasis needed on supporting young people –
- Tackling the immediate problem of obesity – especially in school-age children
- Concern that NHS not reassuring public about the impact of any new housing developments on services
- Concern too that L.A. planning process does not focus enough on creating healthy environments – open spaces/cycling/walking/air quality/water treatment etc. Does the NHS have any influence?
- Particular concern about how S106 was to be used in planning health and care facilities/services



- Improving access, quality and efficiency by decentralising and localising services and...
- Integrating and managing those services locally.
- Securing the right human and physical resources to do that
- Associated concern that the current local buildings/facilities not being utilised to best effect
- Rebalancing provision of care to include more home/social support/ health promotion/etc.
- Stronger focus on preventing illness - rather than just treating it.
- Better local mental health and NHS dentistry services urgently required
- More emphasis needed on supporting young people –
- Tackling the immediate problem of obesity – especially in school-age children
- Concern that NHS not reassuring public about the impact of any new housing developments on services
- Concern too that L.A. planning process does not focus enough on creating healthy environments – open spaces/cycling/walking/air quality/water treatment etc. Does the NHS have any influence?
- Particular concern about how S106 was to be used in planning health and care facilities/services



- It's a very good fit with the 10 Year Plan!
- Including the urgent need for the health and care system to make three 'shifts':
  - from hospitals to neighbourhoods
  - from treatment to prevention
  - from old to new technology
- The Plan also recognises that it is only by aligning the provision of care at local or *neighbourhood* level that efficient, high quality and accessible services will be delivered.



# *Faversham and the NHS 10 Year Plan*

## the event's purpose ...

- To hear from local health and care service providers about how the *NHS 10 Year Plan* will deliver the improvements we need.
- To clarify where the responsibilities will lie for planning and delivering our services in the future
- To understand how we can support our health and care providers in developing 'partnership working' at a neighbourhood level.
- The creation of a clear citizen-endorsed guide for making the 10 Year Plan happen for Faversham.

## the event process?

listening then talking!



# *Faversham and the NHS 10 Year Plan*

## **‘Question Time’**



*Faversham and the NHS 10 Year Plan -  
What should our neighbourhood expect?*





## Our expert panel...

- **Dr. Jonathan Bryant**, GP; Medical Director, East Kent Health & Care Partnership; Primary Care Clinical Lead, Kent and Medway Cancer Alliance
- **Pauline Butterworth**, Deputy Chief Executive and Chief Operating Officer, Kent Community Health NHS Foundation Trust
- **Rachel Dalton**, Chief Allied Health Professional Officer, Kent Community Health NHS Foundation Trust
- **Cedi Frederick**, Chair, Kent and Medway Integrated Care Board



## The 'Guide' Questions...

- a) What services currently provided in acute hospitals can be 'localised'? When will this happen?
- b) How quickly will the quality and accessibility of home, primary and community services improve? What about social care?
- c) Will there be a single organisation with management responsibility for service planning and delivery in Faversham? How will local people and the voluntary sector be involved in planning? How will local citizens hold the system to account?
- d) How does the local authority and its services fit into all this?
- e) What physical facilities will we need to deliver the new 'devolved' service pattern? Is there a plan for how the buildings funded by the NHS will be used?
- f) How will the anticipated new 'joined-up' IT technology support all this?
- g) What moves will there be in terms of wider health promotion and disease prevention?

services

management

buildings

technology

health



## Our Experts' Concluding Remarks

- A 'centre of influence' on the NHS side needs to be identified so that Faversham knows who to talk to. Without that, it will be more difficult to take neighbourhood health and care forward.
- There needs to be a clearer 'contract' between the NHS and the community (especially the voluntary sector) to ensure the community plays its part in improving health.
- The ICB is keen to work with Faversham because there has already been such a lot of interest and commitment to improving the health and wellbeing of their community



Then facilitated discussions for an hour



## In Conclusion

To make Neighbourhood Health happen, we will need two parallel developments....

- the health service and its partners need to create a *single entity* – perhaps under the umbrella of the Kent Community Health NHS Foundation Trust – that will *be responsible for planning and delivering integrated services for the people of Faversham*. We expect this development will be overseen by the Kent and Medway Integrated Care Board.
- there needs to be a more formal and consistent way of representing local people’s interests in relation to their health and care. Something like a *Citizens’ Assembly* would enable the community to more effectively co-design services with those delivering health and care services and equally important, hold them to account. Developing such a body should probably be the responsibility of *Faversham Town Council*.



## In Conclusion

‘In Conclusion’ sounds like an ending whereas we may have arrived at a beginning! There is a great deal of learning from what Faversham has already achieved and a way forward to make *Neighbourhood Health* a reality for us is clear. So why wait?



## Next Steps...

- Circulation of the interim report to all those who were there (and only those) for comment. These need to be received relatively quickly to enable....
- Update of interim report to a final version that can be widely circulated – including posting the final report on our/your FTC web-site.
- ‘Careful encouragement’ of the health and care system to provide the ‘*single entity*’ that is responsible for planning and delivering our health and care services.
- Faversham Town Council to work with CHSS and FHF on the design of a *Citizens’ Health Assembly*.
- Launch early in the spring?





## CONTACT

<https://favershamtowncouncil.gov.uk/directory/faversham-healthy-futures>

[Email: fhf@favershamtowncouncil.gov.uk](mailto:fhf@favershamtowncouncil.gov.uk)