

# KENT'S PLAN BEE



## June 2021 Newsletter

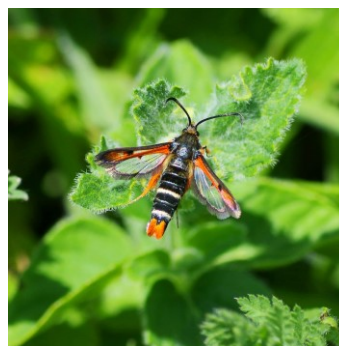
### June's Blog

This month's blog post is about Kent's rare pollinators. Kent is home to some rare specialists, including the Fiery Clearwing Moth, Noble Chafer Beetle and more.

Read it here: <https://explorekent.org/blog/2021/07/01/kents-rare-pollinators/>



*Nobel Chafer Beetle - Credit Harry Green*



*Fiery Clearwing Moth – Credit Melanie Wrigle*

## Highlights from social media for June

### 30 Days Wild

We have taken part in the Wildlife Trust's 30-Days Wild challenge this month, where every day we did an activity relating to pollinators. It was great to see so many of you also doing the 30 Days Wild Challenge.

Don't follow us on Facebook but want to see what we got up to? Our 30 Days Wild for Pollinators activities are available on our website: <https://www.kent.gov.uk/environment-waste-and-planning/nature-and-biodiversity/pollinators/how-you-can-help-pollinators>

### May BBCT Pollin8 Competition

Last month, the Bumblebee Conservation Trust's May pollin8 competition was to show your No Mow May lawns.

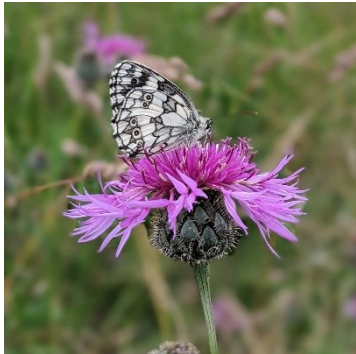
We are delighted to say that May's Pollina8 competition winner was from Kent. Check out all the winners so far from the Pollin8 challenge on their website:

<https://www.bumblebeeconservation.org/beethechange/pollin-8-competition-winners/>

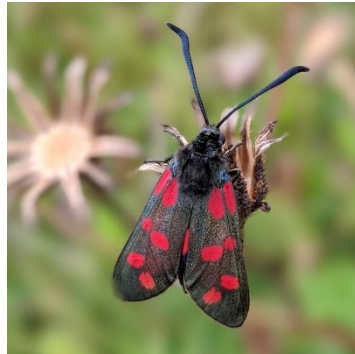
## What to look out for in July

Here are some of Kent's Pollinators to try and spot this month:

Marbled White Butterfly



Six-spot Burnet Moth



Swollen Thigh Beetle



Others to see include:

- Sea Aster Mining Bee
- Large Skipper Butterfly
- Cinnabar Moth

If you wish to see more updates, follow us on Facebook.

<https://www.facebook.com/KentsPlanBee>



If you received this email indirectly and would like to subscribe to our mailing list, please email us on the address below with the subject line "Sign Up".

If you wish to unsubscribe from this mailing list, please email us on the address below with the subject line "Unsubscribe".

[planbee@kent.gov.uk](mailto:planbee@kent.gov.uk)

*For a Pollinator Friendly Garden of England*

