

M20

Replacement of the East Street Footbridge Update

Work continues to replace the previously demolished East Street Footbridge with a new footbridge, as well as a new pedestrian access ramp on the southern side of the bridge.

Works started on 8 August 2020, and is due to be completed in January 2021.

There will be a **full** weekend closure of the M20 in both directions, from **Friday 27 November, 8.00pm to Monday 30 November 2020, 6.00am** between junctions 3 and 4, including the eastbound M26 which will be closed at junction 2a for the installation of the footbridge deck across the M20.

The closure of lane one on both sides of the M20 will remain in place for the duration of the project, with reduced lane widths and a 50mph speed limit in place at all times.

Closures

Lane one of the M20 London-bound carriageway will be closed and a 50mph speed limit will be in place.

Lane one of the M20 coast-bound carriageway will be closed and a 50mph speed limit will be in place.

The M20 will be closed in both directions between junctions 3 and 4. The eastbound M26 will also be closed at junction 2a.

Dates and timings

Tuesday 11 August 2020 to end of January 2021

Thursday 8 October 2020 to end of January 2021

Friday 27 November, 8.00pm to Monday 30 November 2020, 6.00am

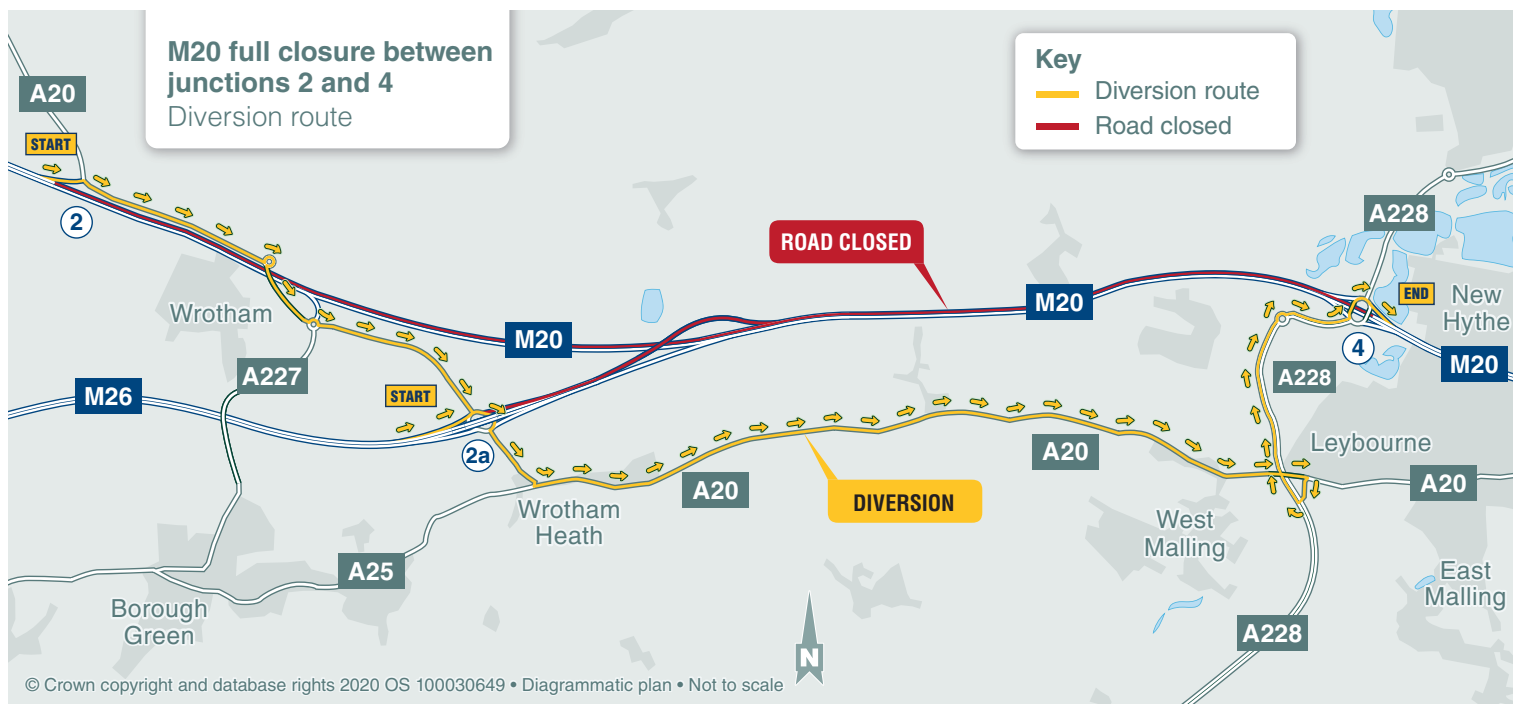
Contingency date:
Friday 4 December, 8.00pm to Monday 7 December 2020, 6.00am



Please be aware that the installation of the new footbridge is weather dependent, therefore the contingency weekend of Friday 4 December 2020 will also be provisionally booked.

Diversion route

Whilst we carry out the weekend closure, the following diversions will be in place.



M20 westbound: Westbound traffic will be diverted off the M20 at junction 4 and onto the A228, before joining the A20, continuing on this road to either join the M26 at junction 2a.

M20 eastbound: Eastbound traffic will be diverted off the M20 at junction 2 and onto the A20, continuing to join the A228 before re-joining the M20 at junction 4.

M26 eastbound: Eastbound traffic will be diverted off the M26 at junction 2a and onto the A20, continuing to join the A228 before re-joining the M20 at junction 4.

Find out more

For more information on this project, please visit <https://highwaysengland.co.uk/our-work/south-east/m20-replacement-of-east-street-footbridge/> for updates.

For general enquiries please call Highways England Customer Contact Centre on **0300 123 5000** or e-mail info@highwaysengland.co.uk

© Crown copyright 2020.

You may re-use this information (not including logos) free of charge in any format or medium, under the terms of the Open Government Licence. To view this licence: visit www.nationalarchives.gov.uk/doc/open-government-licence/ write to the Information Policy Team, The National Archives, Kew, London TW9 4DU, or email psi@nationalarchives.gsi.gov.uk.

Mapping (where present): © Crown copyright and database rights 2020 OS 100030649. You are permitted to use this data solely to enable you to respond to, or interact with, the organisation that provided you with the data. You are not permitted to copy, sub-licence, distribute or sell any of this data to third parties in any form.

This document is also available on our website at www.highwaysengland.co.uk For an accessible version of this publication please call **0300 123 5000** and we will help you.

If you have any enquiries about this publication email info@highwaysengland.co.uk or call **0300 123 5000**.*

Highways England creative job number GFD20_0132

*Calls to 03 numbers cost no more than a national rate call to an 01 or 02 number and must count towards any inclusive minutes in the same way as 01 and 02 calls. These rules apply to calls from any type of line including mobile, BT, other fixed line or payphone. Calls may be recorded or monitored.

Registered office Bridge House, 1 Walnut Tree Close, Guildford GU1 4LZ
Highways England Company Limited registered in England and Wales number 09346363